

Assistant Referee

All-American Athletic Association

Ron Minoletti 2/2/09

All Alone!!

- Wrestling is one of a few sports where there is one official per contest.
- About 98% of the season the wrestling official is on the mat by himself.

The Problem!!

- When we do work with an assistant official, in most cases we haven't worked with them before or it's been a long time.
- Understanding each others role.
(“Just stand there and let me work!”)
- Be a part of a “TEAM”
- BOTH officials are equally responsible for the match

Why work with an Assistant?

- Beginning in 2005 the MHSAA and NFHS stressed the need for use of assistants at every opportunity.
- To improve calls on the mat.
- To create greater consistency.
- It is another set of eyes
- **TO GET IT RIGHT!!!**

Assistant Referee Duties

- Granted the same mobility as the referee and will compliment and assist the head official
- Maintain constant verbal communication (to include technical violations, illegal and potentially dangerous situations)
- The two referees should be facing each other 180 degrees apart
- In near fall situations, the assistant should not be down on the mat
- To observe locking hands, grasping of clothing, and/or other illegal actions and properly signal the referee
- When necessary, meet briefly with referee to discuss situations (quietly and away from coaches, wrestlers, and scorers table 3-2-2f)
- Assistant referee does not address coaches
- Maintain the wrestlers in center of the mat during officials/coaches/scorers time out discussions
- Be in position to see both the action and the clock near the end of a period
- Monitor the scoring table to ensure points are displayed properly

Officials Pre-match Discussion of Communication/Signals

Getting Started

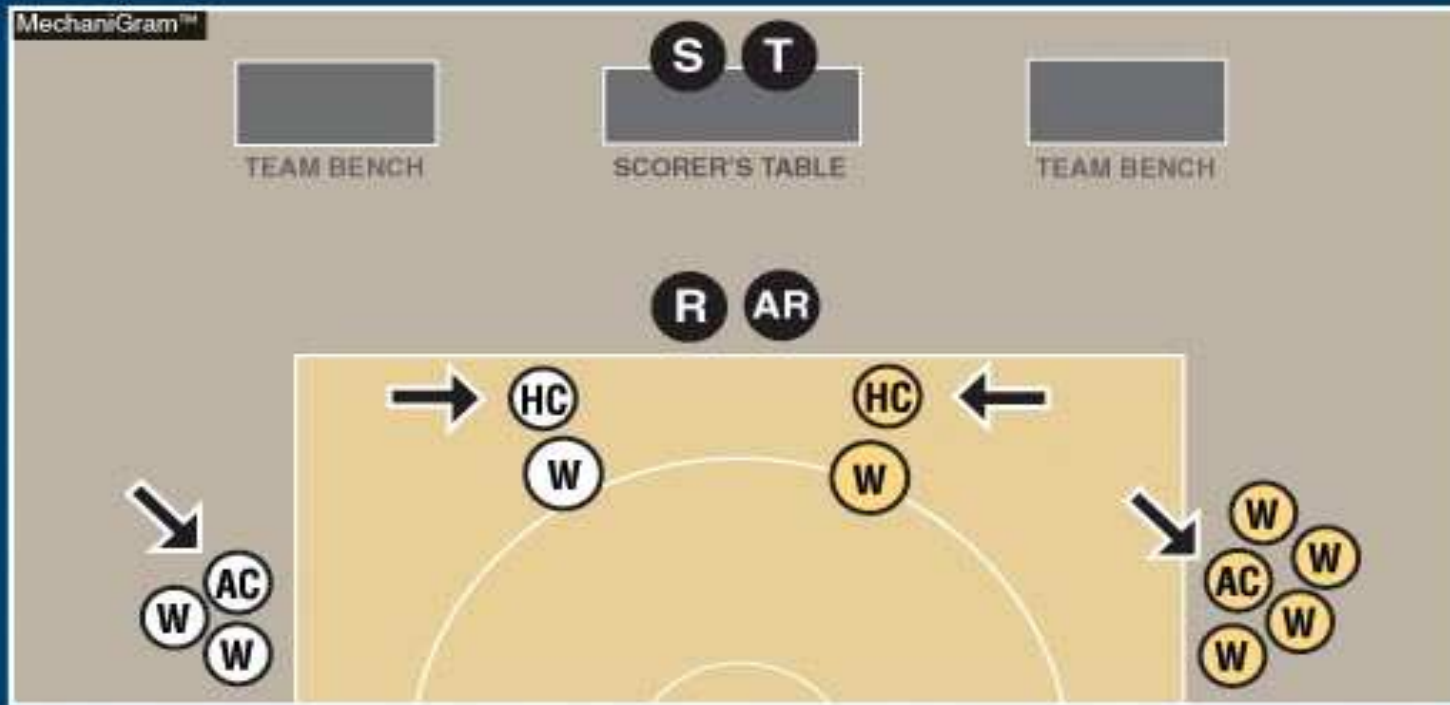
- Communication
 - Before you start the lead official and the assistant need to discuss the roles and expectations during the match.
 - Ensure that there are no misunderstandings or no surprises on the mat.
 - Positioning:
 - Neutral, Line Calls, Top/Bottom Starts, and Near Fall
- Notification of Locked Hands (note this is the only allowable signal by an assistant referee)
- Signals
 - How are you going to let the lead know you want to talk?
 - “THE LOOK” or Other? Talk prior and decide how you will convey the need to talk.

.

Sportsmanship



Rule 3-1-4e Referee

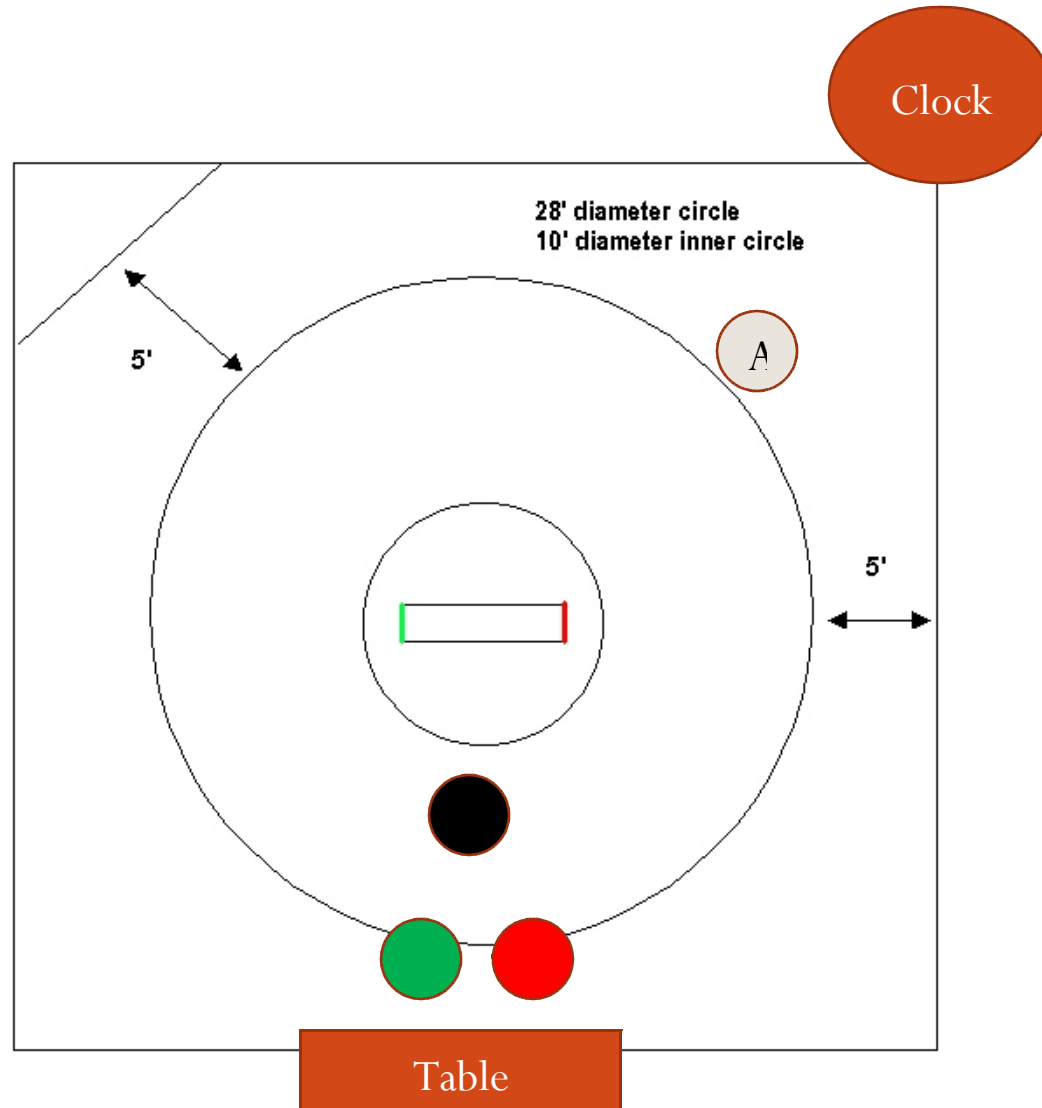


Referees meet with the *head coaches* and captains and explain to them that they are to make certain everyone exhibits good sportsmanship...

During Check-in and Start of Match

All-American Athletic Association

DURING CHECK-IN



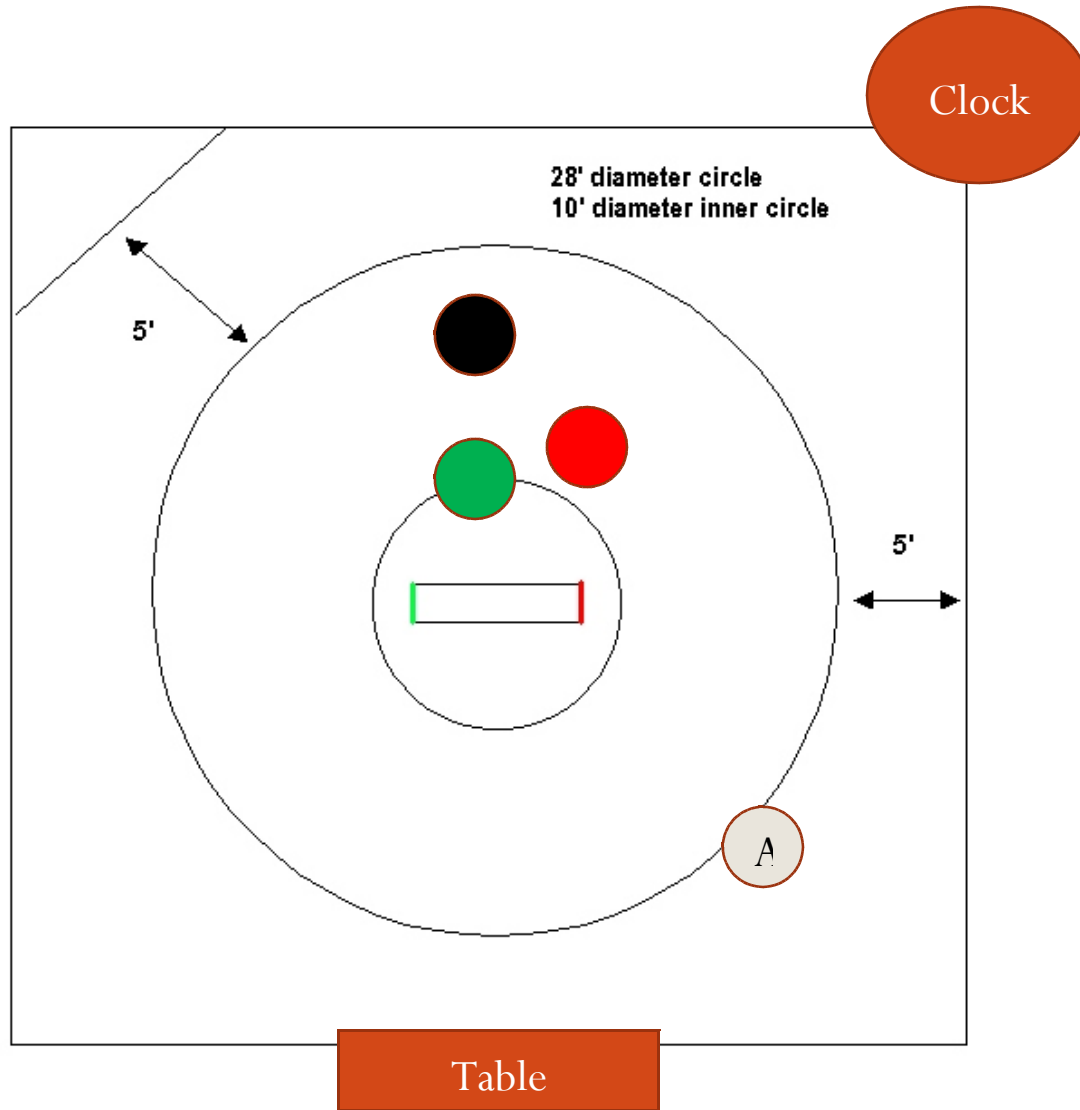
Positioning

- The assistant should be the first on and the last off.
- Freedom to move wherever, but should try to stay to the outside of the wrestling area.
- Mobility and communication in complement with the referee – this may include passing by and unobtrusively speaking to the referee. For example stating, “red” or “green” to indicate who the assistant feels is stalling. Communication!
- If the lead official goes to the table, stay in the center with the wrestlers.

Neutral Positioning

All-American Athletic Association

NEUTRAL POSITIONING



**Assistant referee is 180
opposite the referee and near
the outer circle**



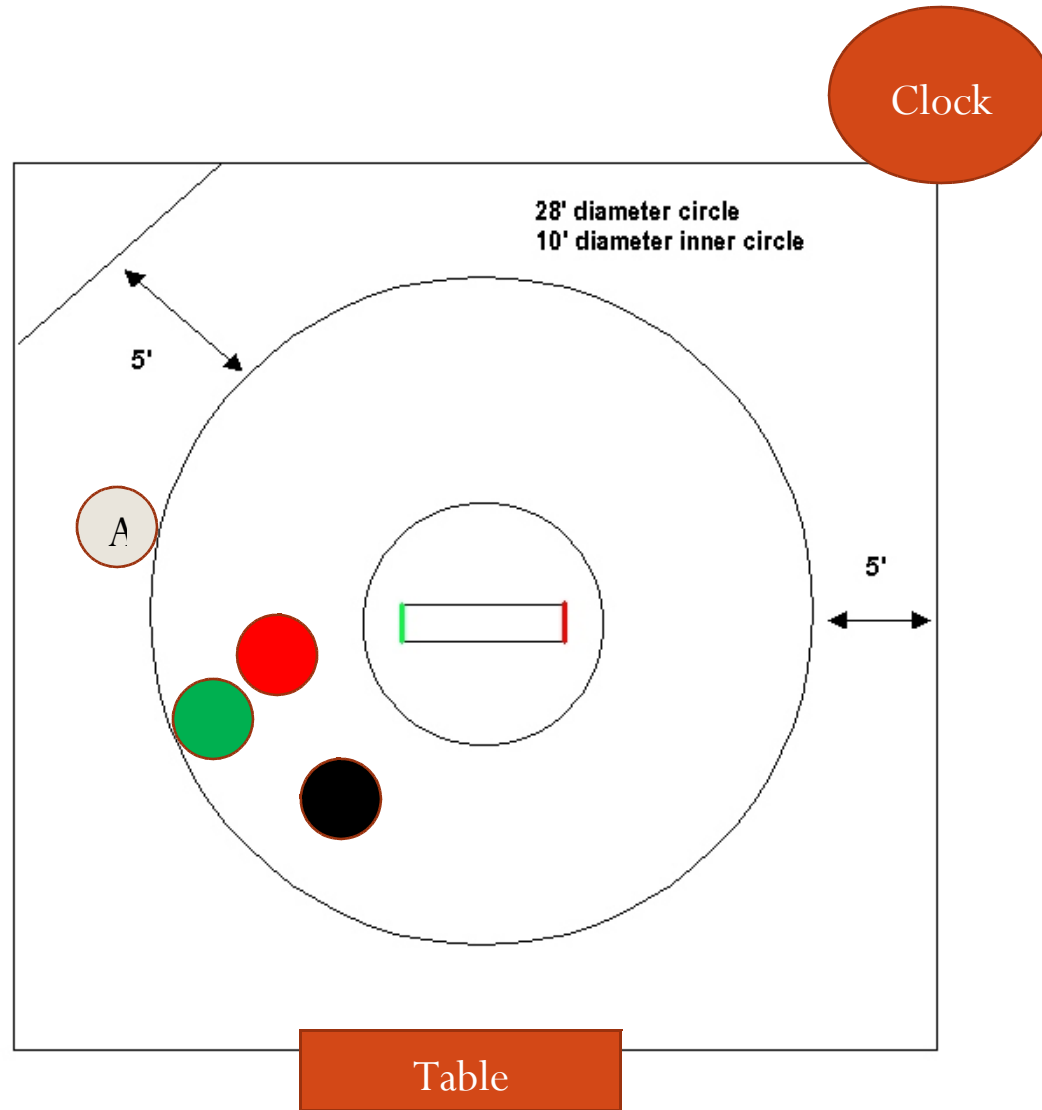
Neutral Positioning

- Out of the Circle
- Stay 180 degrees opposite the lead
- Distant from the action
- Is the clock running?
- Does the timer/scorer have the correct score on the board?
- While the assistant has the same mobility as the referee, there are restrictions as to where the assistant should or shouldn't be during certain situations.

Neutral with Line Calls

All-American Athletic Association

NEUTRAL with LINE CALLS





**Both referees
positioned for
a line call**





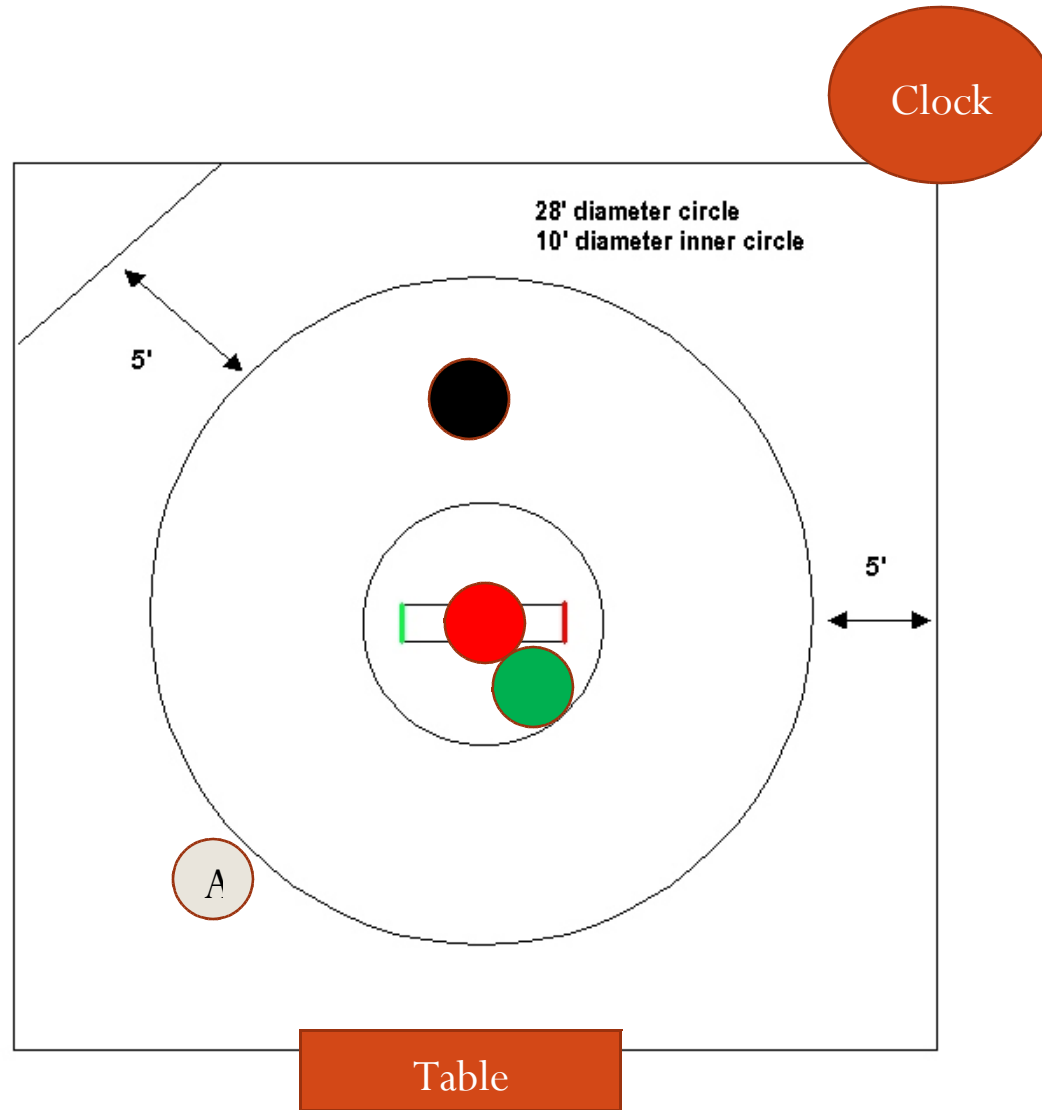
Neutral with Line Calls

- Assistant should be 180 degrees and near the out of bounds line yet maintain a position facing the lead referee.
- Straddle the line
- Distance yourself from the action
- Observe surroundings (for safety)
- The assistant as well as the referee should never “catch” an out-of-bounds wrestler. They should be watching for out-of-bounds criteria for awarding of points or an out-of-bounds call.

Top / Bottom Starts

All-American Athletic Association

TOP / BOTTOM STARTS





**Referees
positioned for
top/bottom start**



**Do you want this
much help?
Communication**

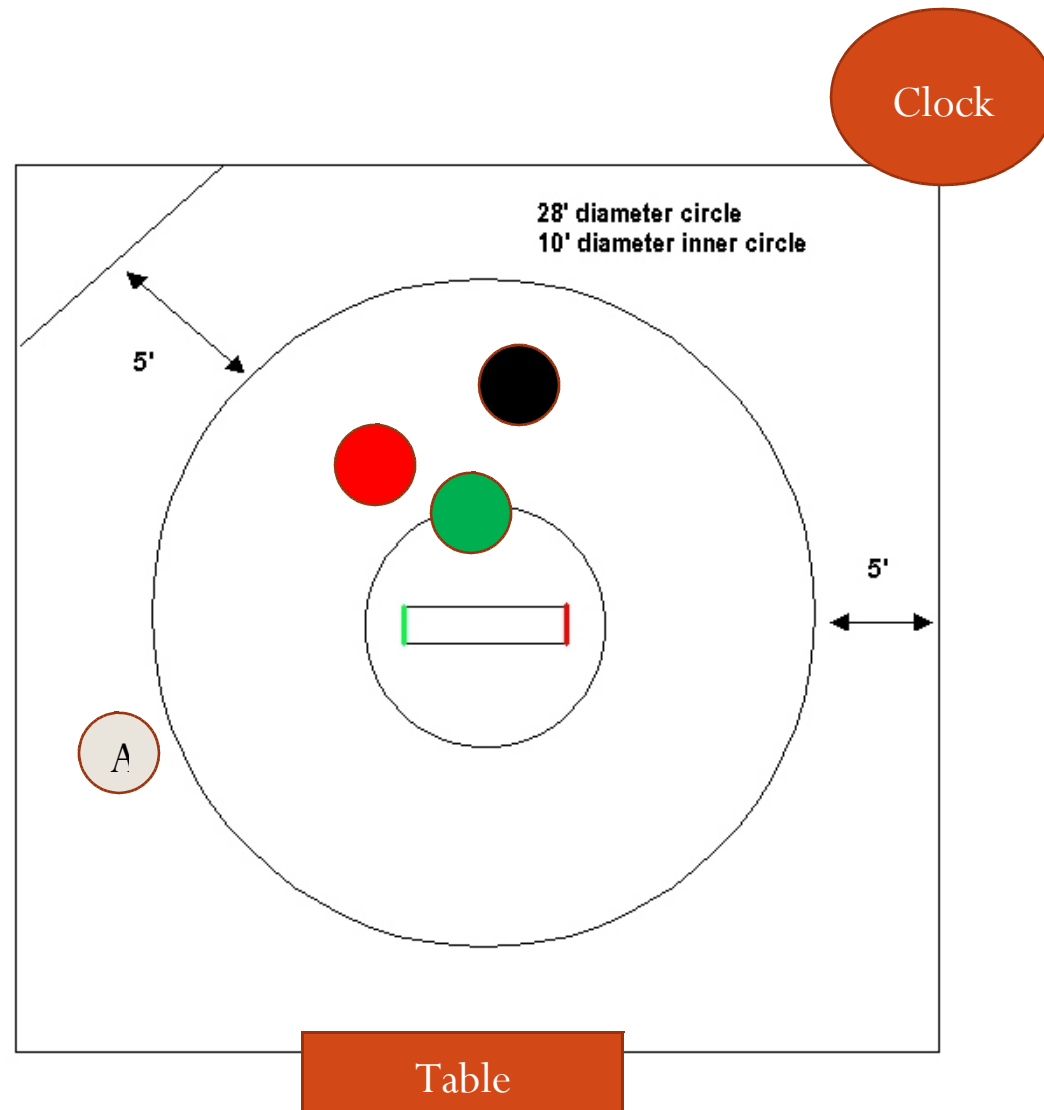
Top/Bottom Starts

- Referee's position: Assistant should take a position behind (normally) wrestlers to observe trail leg of advantage wrestler (for straddling of opponent). Position should place assistant somewhat opposite of the referee and can be tighter to the 10 foot circle than in the Neutral starting position. Also, if out of the wrestlers sight, the assistant can be moving to observe proper positioning.
- Optional start: Same as Referee's position, but look for hand placement on back as well as straddling by the offensive wrestler. Keep your distance.

Start and End of Period / as Time Expires

All-American Athletic Association

START and END OF PERIOD / as TIME EXPIRES



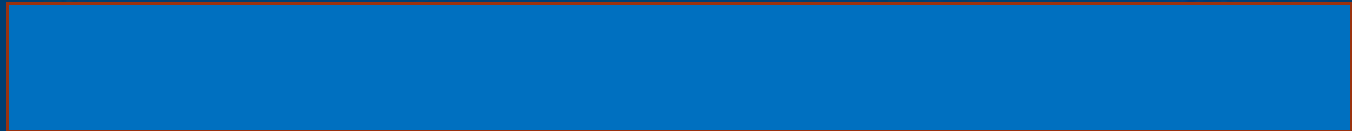
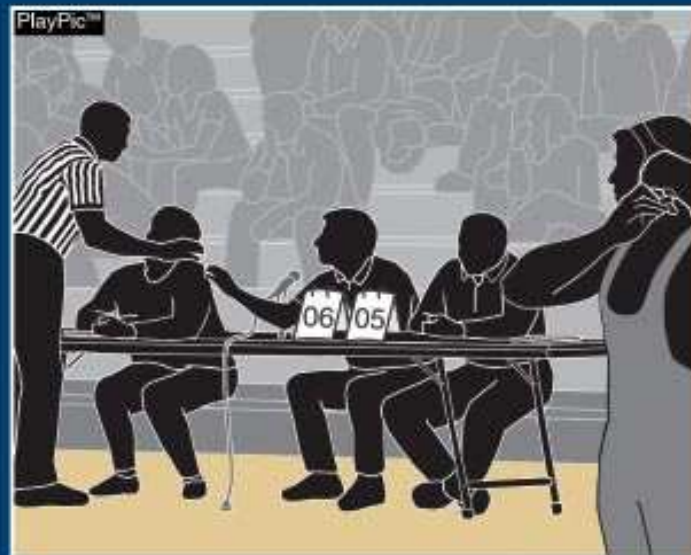


Correction of Error

Rule 6-6-4a 1 (NEW)
Rule 6-6-5a 1 (NEW)



VISIBLE SCOREBOARD



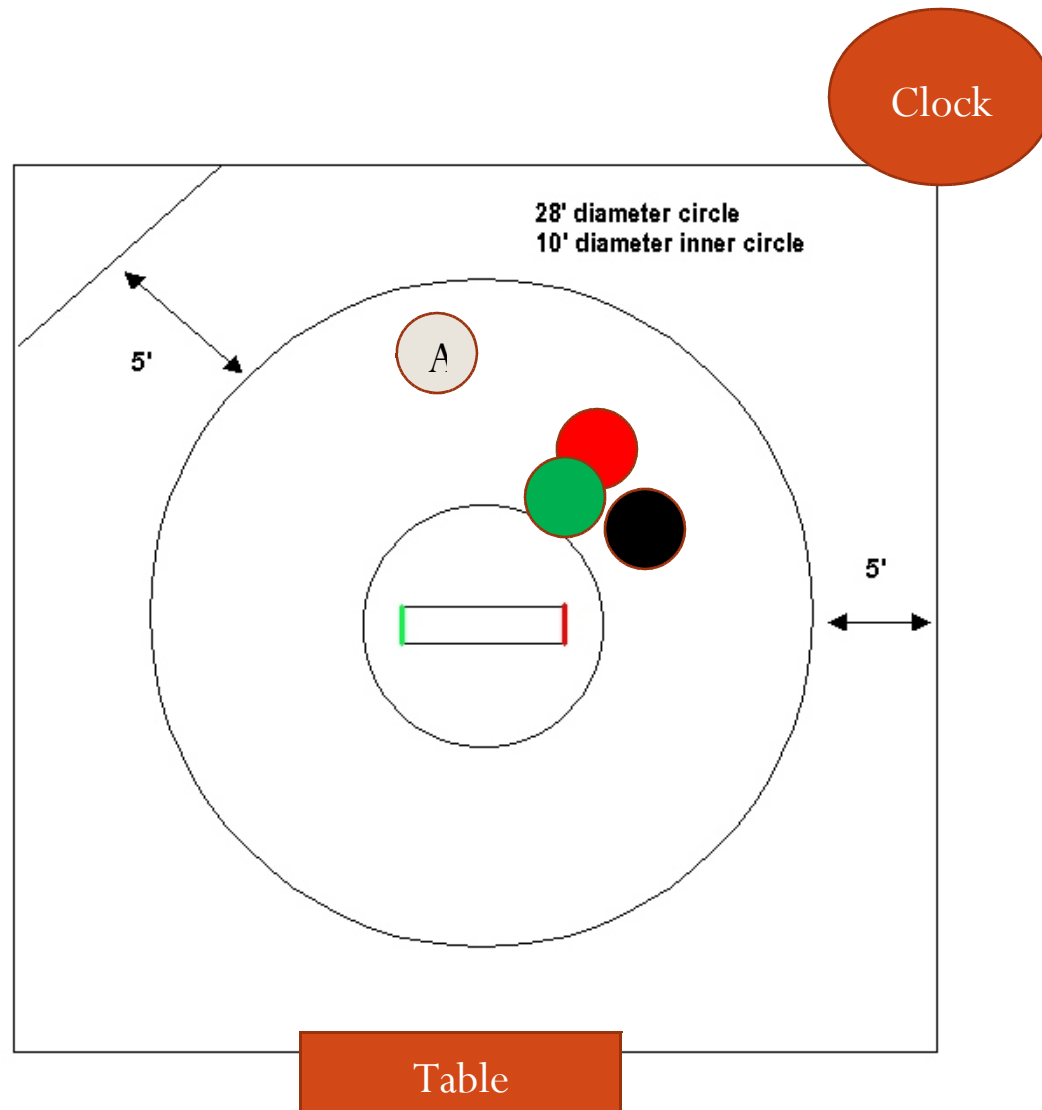
Positioning While Clock is Running

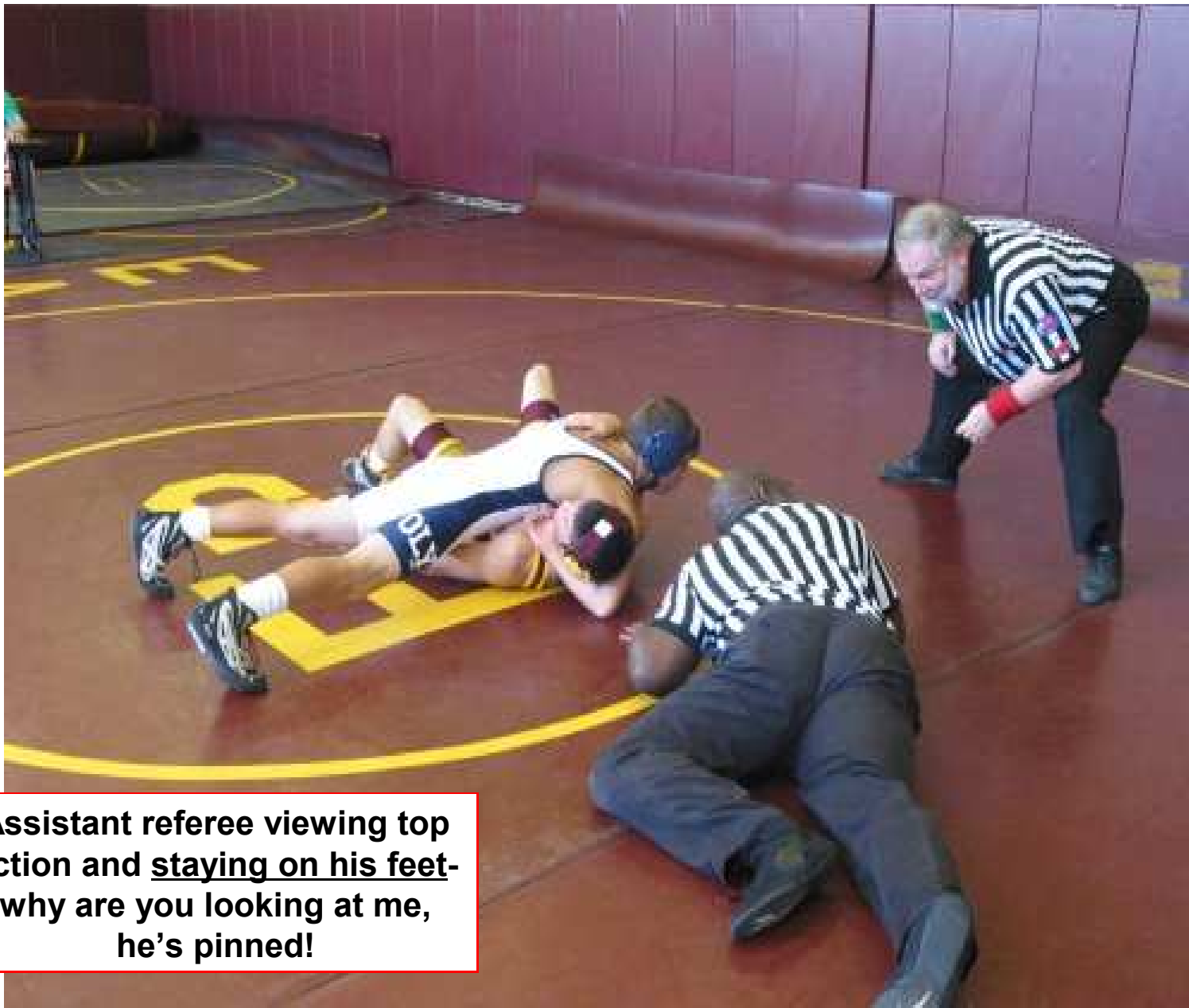
- Take a look at the clock to see if started or stopped on time.
- Note time on clock in all situations where the match should be stopped and quickly, but hopefully unobtrusively, notify referee.
- Assistant should be constantly moving, allowing the referee to align where he wants to be and the assistant moving out of the referee's way.
- Assistant should stay in the flow of the match and be in position to help at the conclusion of the period and on edge of mat calls.
- Assistant, when in disagreement with the referee, should take up position near the referee and unobtrusively, state that opinion. The referee will not stop the match unless necessary and only when NO significant action is taking place.

Pinning Situations

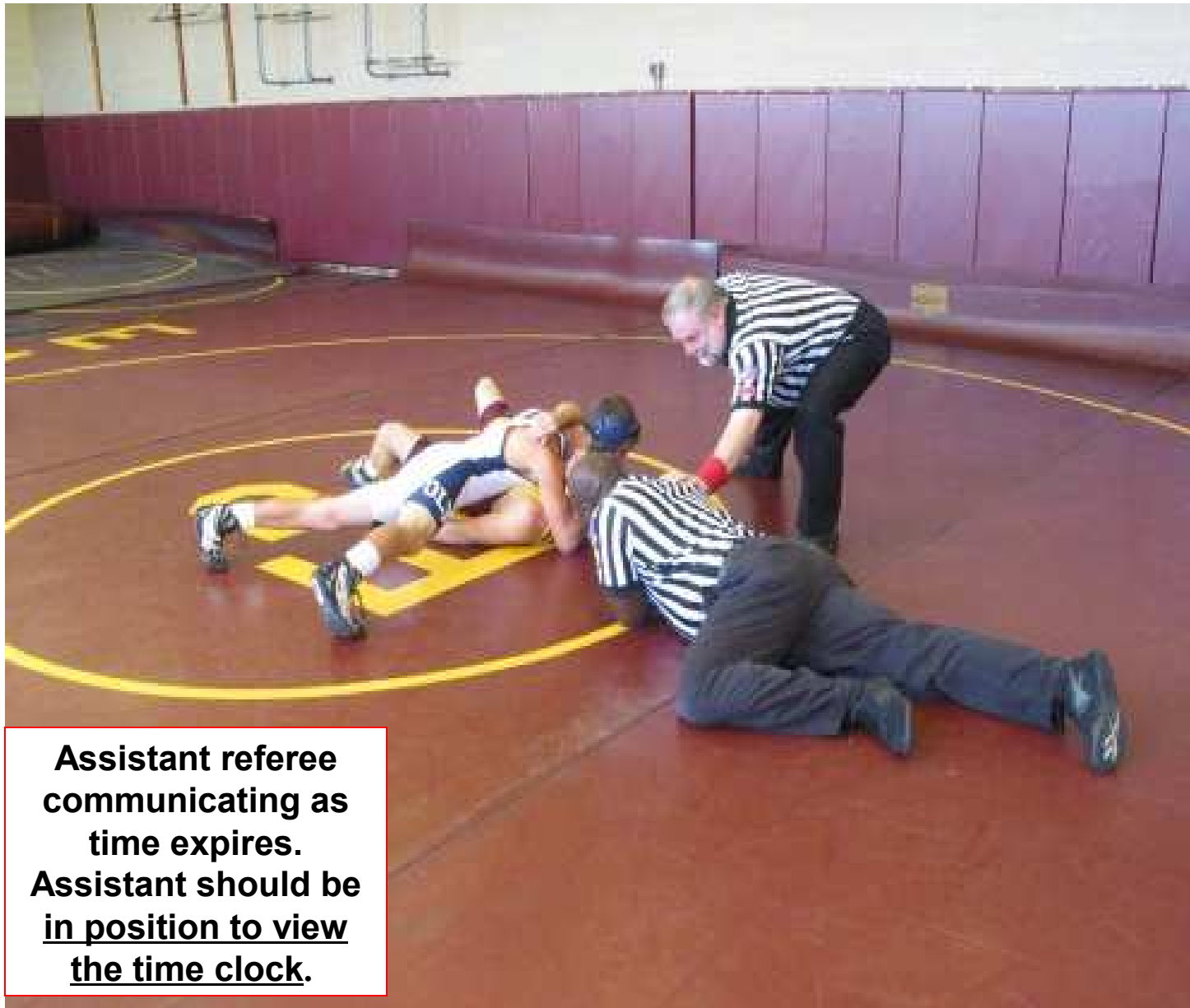
All-American Athletic Association

PINNING SITUATIONS





Assistant referee viewing top action and staying on his feet- why are you looking at me, he's pinned!



**Assistant referee
communicating as
time expires.
Assistant should be
in position to view
the time clock.**

Pinning Situations

- Can move closer to the action, yet not too close to be hit on a scramble.
- In a pinning situation, the assistant should be watching from above for legality of the hold as well as keeping the referee aware of the time remaining.
- Assistant in near fall situations should not be looking for a fall, but instead should be watching for illegalities on the top by either wrestler, as well as checking the match clock for expiration of time
- Should an illegal action take place, verbally notify the referee so he can take appropriate action.



**ILLEGAL no
elbow in circle**

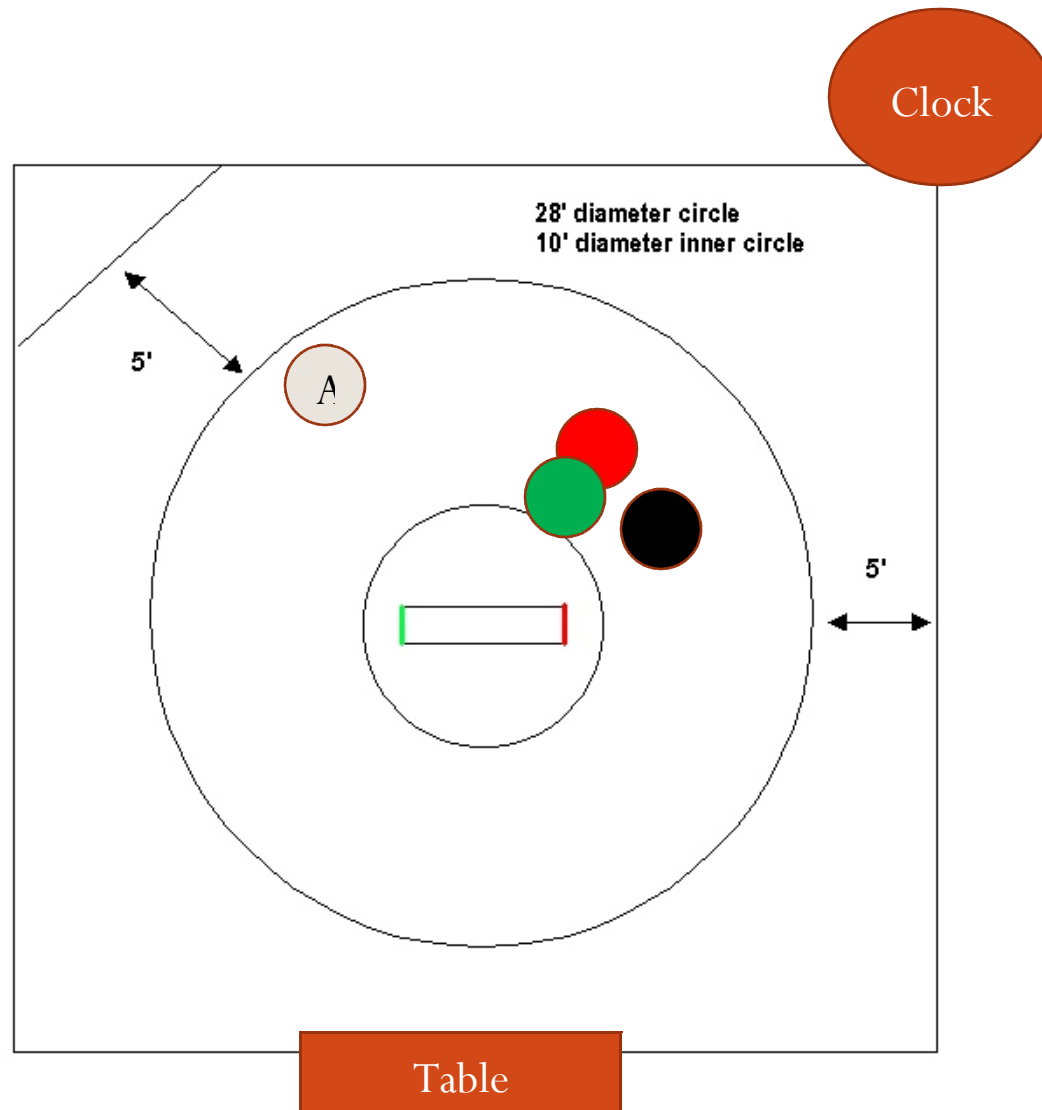
ARE YOU GOING TO STOP THIS SITUATION?
IS THERE ANY ADDITIONAL PENALTY ON THE BOTTOM
WRESTLER?



Illegal / Technical Violations / Blood

All-American Athletic Association

ILLEGAL/TECHNIAL VIOLATIONS/BLOOD SITUATIONS



Illegal / Technical Violations / Blood

- Monitor the action to include acts of unnecessary roughness, unsportsmanlike conduct (to include wrestlers and coaches UNSP)
- Watch for locked hands, grasping of clothing, headgear, illegal holds
- Potentially dangerous: Be close enough to quickly assist and inform the lead of a PD situation.
- Watch for bleeding
- Should any of the above actions take place, verbally notify the referee so he can take appropriate action.



Illegal / Technical Violations / Blood

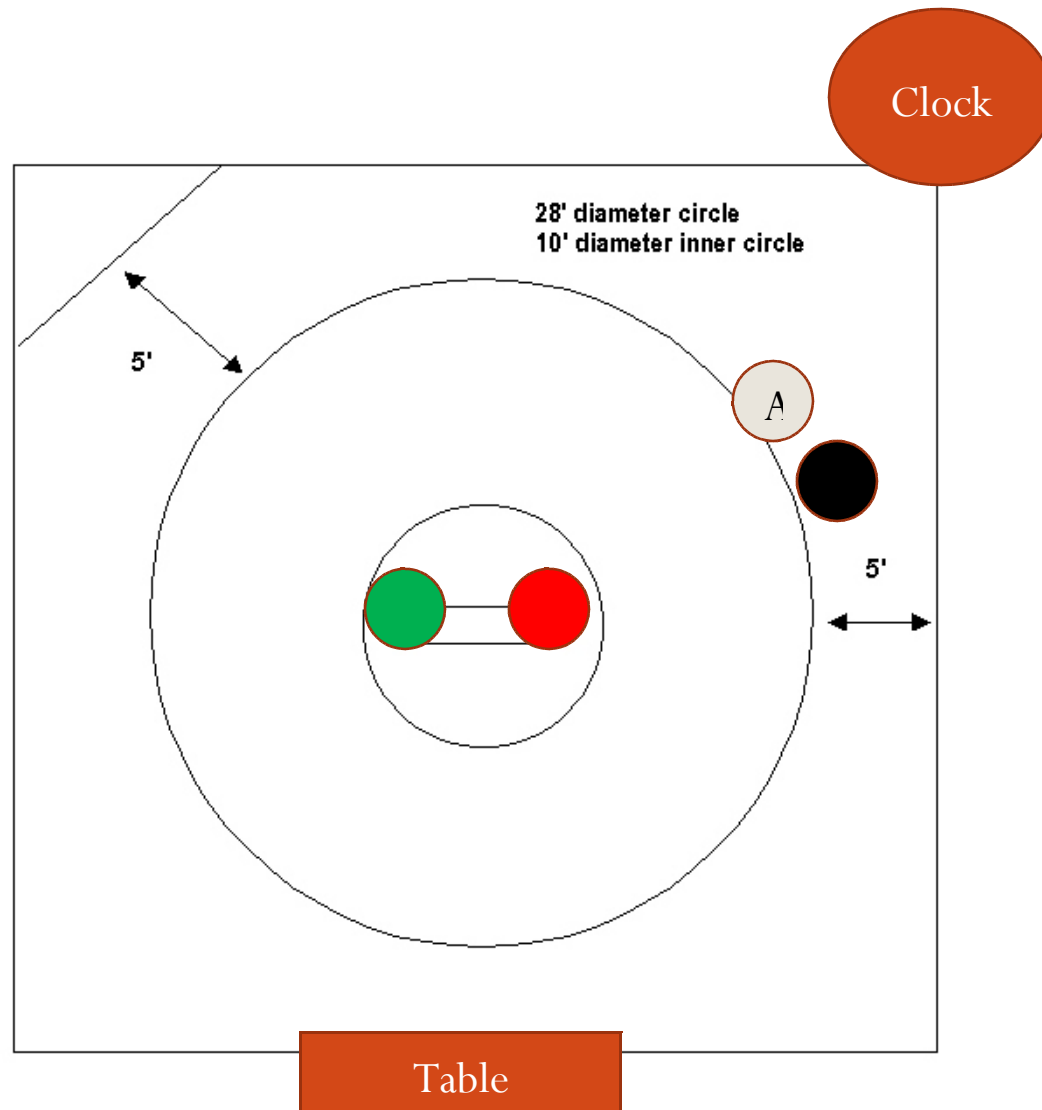
The locked hands signal is the only indicator that is to be displayed by the assistant:

- Assistant must be absolute in this signal, knowing that you saw it and the referee did not. Try to be casual but professional in communicating this signal to the referee.
What is the correct locked hands signal?
- When done properly the locked hands signal should be noted by the lead referee and he then should indicate the infraction with the proper signal.
- If stoppage is not required then points should be awarded for the T.V, defensive score and the match should continue smoothly.
- If stoppage is required then the assistant has the time from where to restart in his mind.

Officials Discussions

All-American Athletic Association

OFFICIALS DISCUSSIONS







I can
hear
you!!



Assistant Referee Rule 3-2-2f



When necessary, the referee and assistant referee shall meet briefly on the edge of the mat away from wrestlers and coaches, *away from the scorer's table* to discuss...



Officials Discussions

- When there is a disagreement between the assistant and the referee, the contestants should be within the ten foot circle and the officials should meet near the edge of mat the, away from anyone else.
- When the lead and the assistant disagree, the ruling of the lead official shall prevail.
- Once a ruling has been determined, the lead official should return to the center of the mat and using the proper signal award points as determined.

Time Outs

All-American Athletic Association



Coach Misconduct Rule 5-5-2

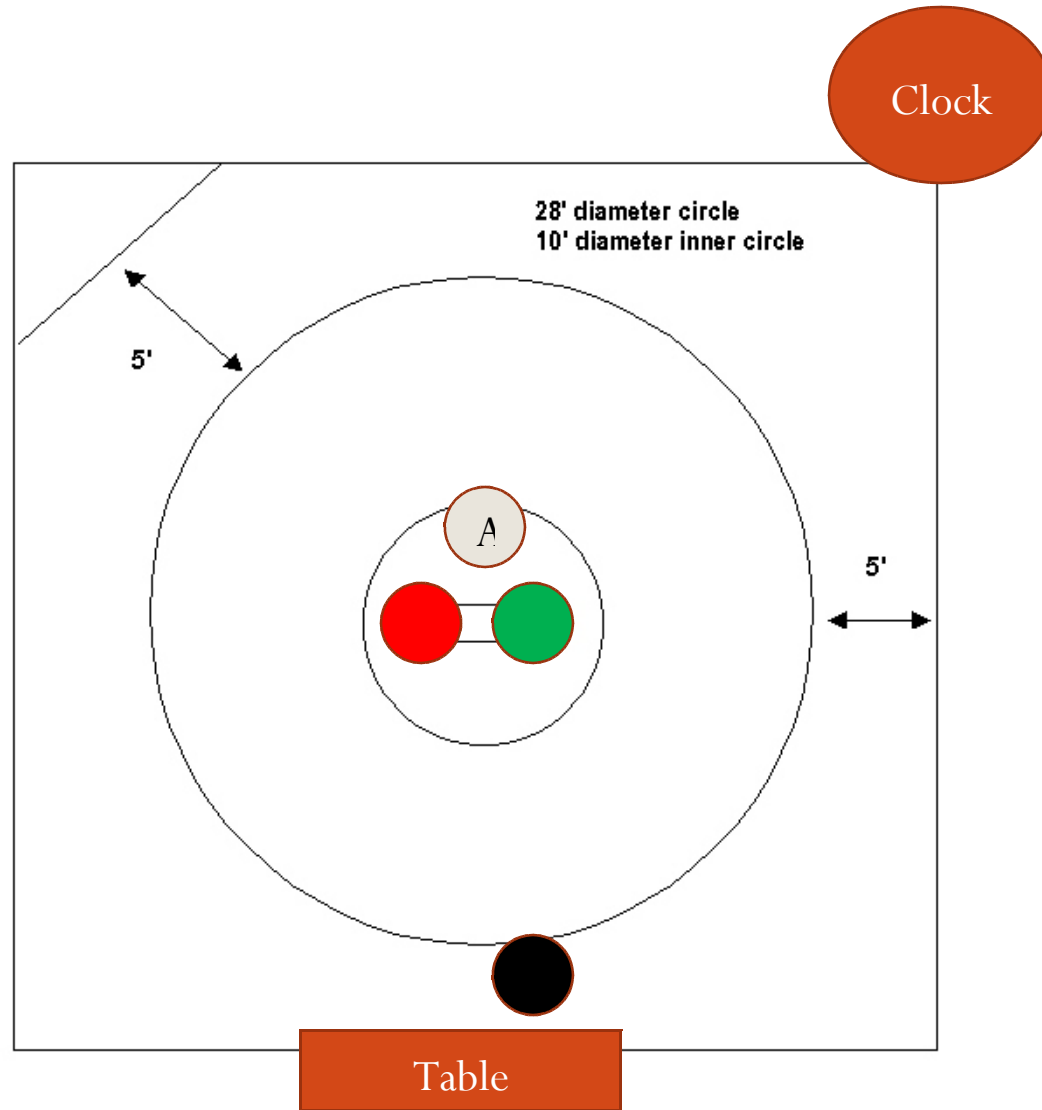


PlayPic™



**Assistant coach disputes; no
misapplication of the rule.**

TIME OUTS



Role During Time-Outs

- The assistant will move to the center of the mat and maintain both wrestlers within the 10 foot circle.
- The assistant will enter a lead official/coaches / scoring discussion only if requested by the lead.

End of the Match

All-American Athletic Association

End of Match

- Be first on and last off to observe inappropriate action while the wrestlers are leaving the mat. Watch the corners and the benches as well.
- Remain in the ten foot circle with the two contestants if the lead is at the scorer's table.
- Be an integral part of the officiating by blending in.
- Blend in and keep a low profile

Wrap Up

All-American Athletic Association

DO's

- Discuss expectations before working together
- Provide help when asked
- Use only “Approved” signals
- Move your feet – stay opposite your partner
- Communicate quietly (when required)
- Check Clock frequently (on starts/stops to see if running)
- Check Score frequently (make sure points awarded are displayed correctly)
- Align with the action and clock as the period ends
- Enter the circle to observe for illegal actions (during a pinning situation)
- Pinning situation – communicate properly when illegal action occurs
- Keep wrestlers in the center when lead official is at the table
- Join conversation to help scoring errors when asked
- “Signal” your partner discretely when you feel conversation is needed

Don'ts

- Arms Folded
- Hands in pockets
- Whistle Out
- Stand stationary in one spot the entire match
- Interact with the coaches – “Defer” to head official
- Get too close to the action – stay outside until needed
- Communicate with non-approved signals
- Mom watch

Wrap Up

- Talk about expectations before you step on the mat
- Make sure you know how you will communicate
- Did he have a better “angle” on the call?
- Talk as long as need be to understand what happened and what is correct.
- Agree to Disagree – Lead official has the FINAL say
- Slow it down when there is need to control emotions
- Support the lead on tough calls
- Keep both wrestlers / coaches in your view
- Pay Attention to EVERYTHING!

GET IT RIGHT!